

# Answers to Additional Practice

**DIRECTIONS:** Choose the best answer.

1. Which group of decimals is ordered from least to greatest?

- (A) 3.332, 3.321, 3.295, 3.287, 3.111
- (B) 3.424, 3.425, 3.339, 3.383, 3.214
- (C) 3.109, 3.107, 3.278, 3.229, 3.344
- (D) 3.132, 3.234, 3.262, 3.391, 3.406

2. Which of the following is not equivalent to the shaded portion of the figure?

- (F)  $\frac{1}{3}$
- (G)  $\frac{2}{6}$
- (H)  $\frac{12}{36}$
- (J) 30%



3. Cole and Jenny split a candy bar. Cole ate  $\frac{3}{16}$  and Jenny ate  $\frac{11}{16}$ . Who ate more? Did they eat the whole candy bar?

- (A) Cole, yes
- (B) Jenny, yes
- (C) Cole, no
- (D) Jenny, no

4. It took Scott  $\frac{3}{6}$  of an hour to get home. What is the decimal equivalent of  $\frac{3}{6}$ ?

- (A) 0.5
- (B) 0.36
- (C) 2.0
- (D) none of these

5. Lucinda has \$1.00 to buy pencils that cost 14 cents each. How many pencils can she buy?

- (A) 14 pencils
- (B) 86 pencils
- (C) 7 pencils
- (D) 114 pencils

6. The stakes in Jack's croquet set are 2 feet long. He drove one stake  $\frac{3}{4}$  foot into the ground. How much of the stake is above ground?

- (A)  $1\frac{1}{4}$  feet
- (B) 2 feet
- (C)  $\frac{3}{4}$  foot
- (D) 1 foot

7. Which of the following figures represents a prime number?



Figure A



Figure B

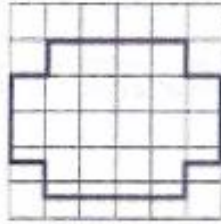
- (A) They are both prime.
- (B) Figure A
- (C) Figure B
- (D) Neither is prime.

8. Write 26 as the product of its prime factors.

- (A)  $2 \times 6$
- (B)  $2 \times 13$
- (C)  $2 \times 2 \times 3 \times 3$
- (D)  $4 \times 9$

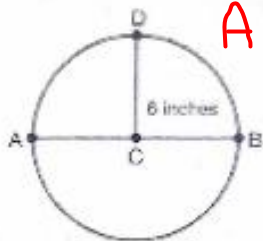
$$\begin{array}{c}
 26 \\
 \swarrow \quad \searrow \\
 2 \quad 13
 \end{array}$$

9. What is the approximate area of this shape?



- A 16 square units
- B 18 square units
- C 20 square units
- D 23 square units

10. What is the area of this circle?

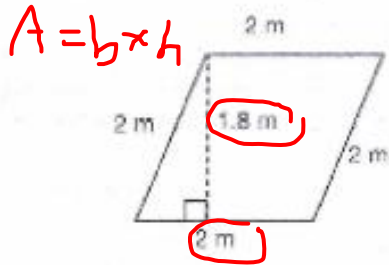


$$A = \pi r^2$$

- F 18.84 in.<sup>2</sup>
- G 36 in.<sup>2</sup>
- H 37.68 in.<sup>2</sup>
- J 113.04 in.<sup>2</sup>

$$3.14 \times 36$$

11. What is the area of this parallelogram?



$$A = b \times h$$

- A 1.8 m<sup>2</sup>
- B 3.6 m<sup>2</sup>
- C 4 m<sup>2</sup>
- D 8 m<sup>2</sup>

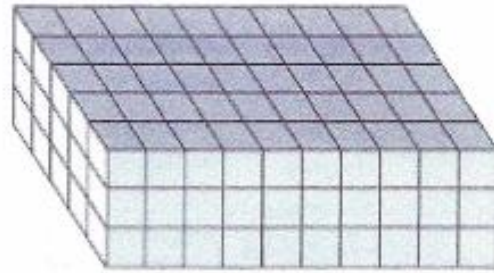
12. Which of the following amounts is the largest?

- F 16 fluid ounces
- G 1 pint
- H 3 cups
- J  $\frac{1}{2}$  quart

13.  $4 \frac{1}{2}$  gallons = \_\_\_\_\_

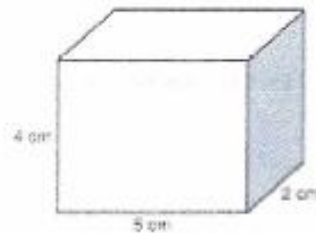
- A 18 quarts
- B 20 quarts
- C 40 quarts
- D 80 cups

14. What is the volume of this figure?



- A 150 cubic units
- B 100 cubic units
- C 53 cubic units
- D 50 cubic units

15. What is the volume of this figure?

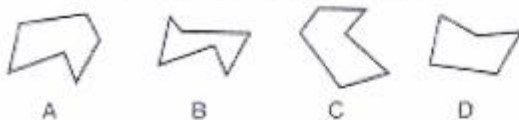


$$V = b \times h \times w$$

- A 10 cm<sup>3</sup>
- B 20 cm<sup>3</sup>
- C 40 cm<sup>3</sup>
- D 80 cm<sup>3</sup>

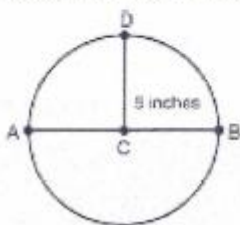


16. Which of the figures below are congruent?



- F B and C  
 G A and C  
 H B and D  
 J A and D

17. What is the diameter of the circle?



- A 5 inches  
 B 10 inches  
 C 31.4 inches  
 D none of these

18. What value does  $b$  have to make both equations true?

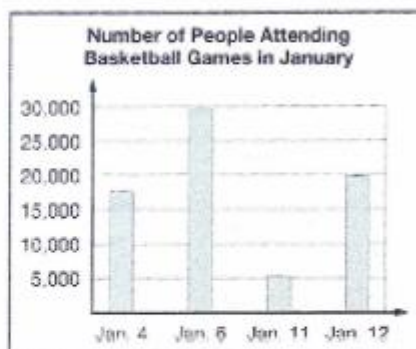
$$b - 9 = 15; 2 \times 12 = b$$

- F 22  
 G 23  
 H 24  
 J 30

19. In which of these is  $y$  equal to 9?

- A  $17 \div 8 = y$   
 B  $y + 17 = 8$   
 C  $y - 8 = 17$   
 D  $8 \times y = 17$

**DIRECTIONS:** Choose the best answer. Use the bar graph for questions 20–21.



20. How many more people attended the Jan. 6 game than the Jan. 12 game?

- F 10,000 people  
 G 8,000 people  
 H 5,000 people  
 J 2,000 people

21. On one of the dates, a snowstorm prevented many people from going to the game. On which date did the storm occur?

- A Jan. 12  
 B Jan. 4  
 C Jan. 11  
 D Jan. 6

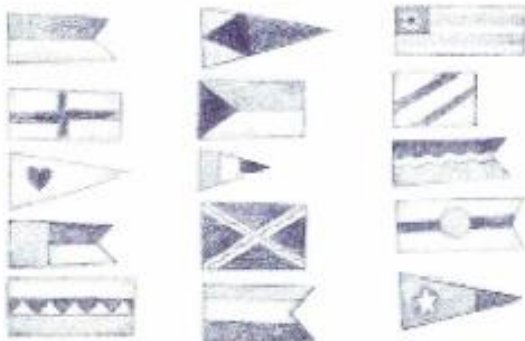
22. The Spanish Club wants to buy a set of instructional videos. Each video costs \$12.50. What information will they need to determine how much money they must raise to buy the entire set of videos?

- F the number of students in the school  
 G how long each video is  
 H the number of videos in the set  
 J how many students there are in the Spanish Club

23. An auto mechanic earns \$19 an hour. She works 8 hours a day. Which number sentence shows how to find how much she earns in a day?

- A  $19 + 8 = \square$
- B  $19 - 8 = \square$
- C  $19 \times 8 = \square$
- D  $19 \div 8 = \square$

24. Which of these number sentences would help you find the total number of flags?

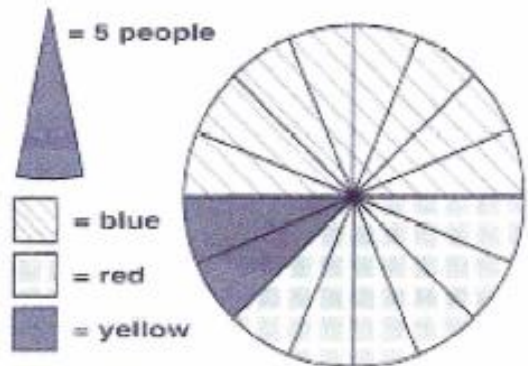


- F  $5 + 3 = \square$
- G  $5 - 3 = \square$
- H  $5 \times 3 = \square$
- J  $5 \div 3 = \square$

25. A waterproof jacket costs \$49.95. The cold-weather lining for the jacket is \$22.50 and a matching hat is \$12.75. How much would it cost to buy the jacket and liner, but not the hat?

- A \$85.20
- B \$72.45
- C \$61.45
- D \$62.70

**DIRECTIONS:** A survey on favorite colors was taken at Rosa's school. The graph below shows the results of the survey. Study the graph, and then answer questions 26-27.



26. How many more students prefer the color red over yellow?

- F 4 students
- G 12 students
- H 20 students
- J 35 students

27. How many students chose blue as their favorite color?

- A 8 students
- B 50 students
- C 24 students
- D 40 students